

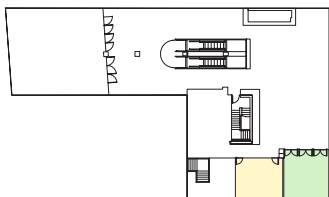
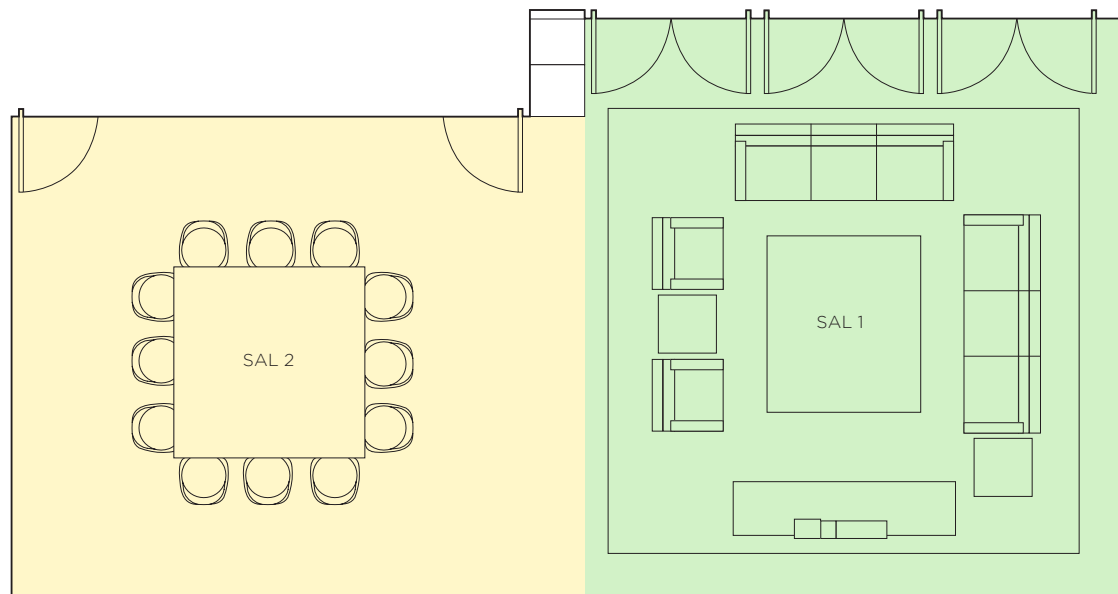


# SAL 1 & SAL 2

 SAL 1  
390 SQ. FT.  
CEILING HEIGHT 13'7"  
RECEPTION 30

 SAL 2  
340 SQ. FT.  
CEILING HEIGHT 13'7"  
RECEPTION 30  
BANQUET / PRIVATE DINING 20  
U-SHAPE 16  
CONFERENCE 20

SAL 1 & 2 COMBINED  
730 SQ. FT.  
RECEPTION 60



## **PUBLIC**

AN IAN SCHRAGER HOTEL  
215 CHRYSTIE STREET NEW YORK NY 10002  
PHONE 212 735 6000 EMAIL SALESNY@PUBLICHOTELS.COM  
PUBLICHOTELS.COM